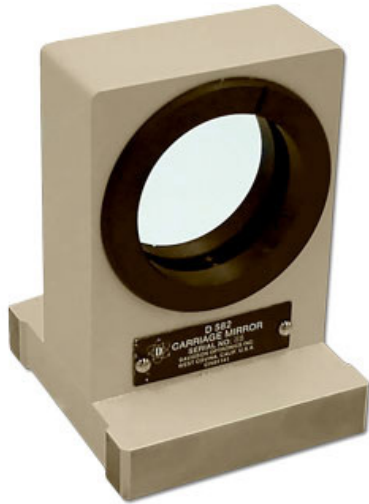


Precision Carriage Mirror | D-582



The Model D-582 Precision Carriage Mirror is ideal for use in applications that require a highly reflective mirror which is invariably positioned at 90° to the surface upon which it rests. Applications include calibration of machine rails, surface plates, and optical elements.

Contact pads on the front and sides of the stainless steel base are designed to ride against a straight edge when checking flatness or straightness of surfaces.

Lightweight yet very stable, the Model D-582 is compatible for use with most highly sensitive autocollimators.

- **Mirror surfaces are fixed perpendicular to bottom pads within 2 arc seconds**
- **Automatic indication of autocollimator parallelism with working surface**
- **Precision lapped contact pads on bottom and all sides of base**
- **Certification of perpendicularity and flatness traceable to NIST**

Specifications

MOUNT	
Material:	Stainless steel base
Finish:	Ivory enamel
MIRROR	
Material:	Fused Silica
Flatness:	$\lambda/10$
Parallelism:	1 arc sec
Surface Quality:	80/50
Coating:	Al, SiO
Aperture:	2 inch (51 mm)
Carrying Case:	Fitted hardwood
Weight:	4 lbs (1.8 kg)
Shipping Weight:	6 lbs (2.7 kg)

2223 West San Bernardino Road
West Covina, California 91790

Phone: (626) 962-5181
Fax: (626) 962-5188

www.davidsonoptronics.com
sales@davidsonoptronics.com